

SPILL-STOP



Hand Tools for the Bartender
Product Catalog



“The best drink in the world is the one in your hand.”
- Harry Gordon Johnson



Spill-Stop. 90 years young.

Founded in 1935 by Fritz Katsky, our brand remains regarded as one of the most popular and influential in the professional pouring industry.

The original makers of the 285-50 Chrome Tapered Pourer, Spill-Stop's core series of metal and plastic pourers are still Made in the USA with a quality standard second to none.

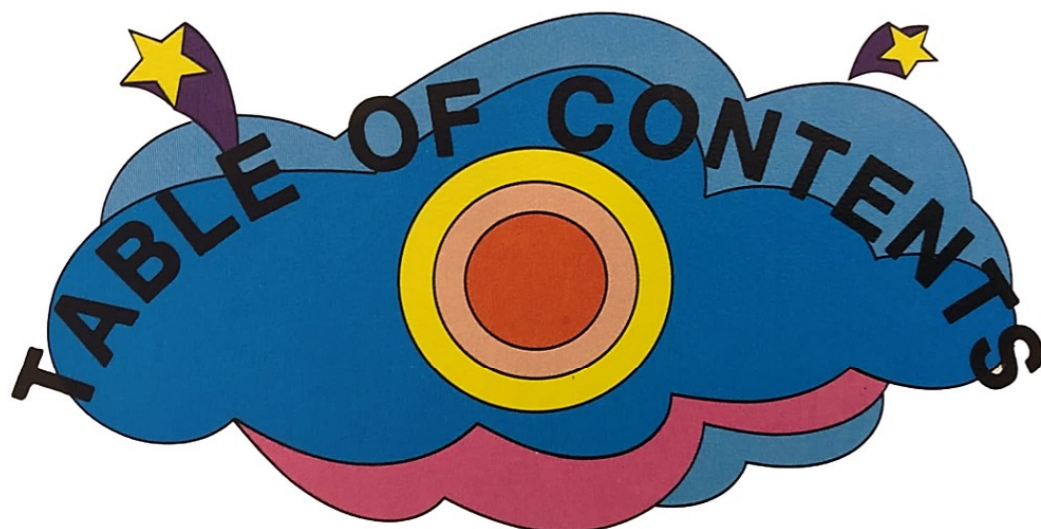
Presented in the pages that follow are a wide range of bar supplies. These are our "hand tools for the bartender", and we're proud and passionate about bringing you only the best in business.

Pour Responsibly.



SPILL-STOP





POURERS	Page 4
....Classic Metal	Pages 5-9
....Plastic Measured	Pages 10-12
....Plastic Free Flow	Pages 13-15
BAR SERVICE	Page 16
....Jiggers	Page 17
....Shakers	Pages 18-19
....Strainers	Pages 20-21
....Misc. Bar Tools	Pages 22-28
....Wine & Champagne	Pages 29-31
UTENSILS, GARNISHING & SINKWARE	Page 32
.... Tongs & Muddlers	Page 33
.... Spoons	Pages 34-35
.... Cut, Peel, & Squeeze	Page 36
.... Food Service	Pages 37-39
.... Sinkware	Pages 40-42
FLAIR BARTENDING	Page 43
BARTENDER PROFILES & RECIPES	Pages 44-47
INDEX	Pages 48

**3632 Stern Ave
St. Charles, IL 60174**

**Phone (708) 345-2200
Toll Free (800) 323-0722
info@spill-stop.com
www.spill-stop.com**

Pourers



“Love one another and help others to rise to higher levels,
simply by pouring out love.”

- Sai Baba

CLASSIC METAL



Why US Made Does Matter!

When you source your pourers from manufacturers outside of the United States, you risk providing your customer a lower quality experience and lost profits per drink:

- Inconsistent pour speeds, translating to overpour and lost revenue (happens far more often than you might think!)
- Leaks, meaning messes but also allowing for debris to gunk up around the lower neck.
- Pourers that don't fit properly will often fall out of the bottle or get stuck and become hard for you to change out on a busy night.
- Sharp edges that can cut fingers when removed.
- Open the door for a broken supply chain at the mercy of global factors beyond your control.

Chrome Tapered Pourers

A seamless, tapered spout allows for a controlled, medium speed pour. The Extra-Large (XL) Poly-Kork fits wider neck ½ gallon, 1.75 liter, and 1 gallon bottles. Packaged with 1 dozen per bag and 1 gross per carton. A minimum order is 1 gross, except the 285-51 and 285-60 which are sold by the dozen. Made in the USA!

Approved and endorsed by the Flair Bartender's Association!

#285-00	w/Natural Cork
#285-50	w/Poly-Kork
#285-51	2/Poly-Kork & Black Collar
#285-60	w/Extra-Large Poly-Kork
#282-50	w/Black Plastic Breather Tube, Excellent for Oil & Vinegar!

Don't OVERPOUR Your Profits Away!



Look for the
Spill-Stop name:
assuring quality
workmanship
for 90 years!



#285-00



#285-50



#285-51



#285-60



#282-50





Prime Flo Medium Speed Pourers

Chrome medium speed pourer with Poly-Kork. Angled spout for smooth, controlled pouring. 4.75" long. Packed 1 dozen per poly bag. #222-50 sold by the gross. #222-51 and #222-60 sold by the dozen. Replacement corks are available. Made in the USA!

#222-50	w/Poly-Kork
#222-51	w/Poly-Kork & Black Collar
#222-60	w/Extra-Large Poly-Kork



#222-50



#222-51



#222-60



Chrome Jet Por

The fastest consistent pour available. Excellent for large drinks or more viscous liquors. Packed 1 dozen per poly bag. #220-00 and #220-50 sold by the gross. #220-51 and #220-60 sold by the dozen. Made in the USA.

#220-00	w/Natural Cork
#220-50	w/Poly-Kork
#220-51	w/Poly-Kork & Black Collar
#220-60	w/Extra-Large Poly-Kork



#220-00



#220-50



#220-51



#220-60

Economy Pourers

Great budget options with unique features.
 #485-50 packed 25 dozen per case. #225-50
 and #296-50 packed 1 dozen per poly bag
 and sold by 1 gross / 144 units per carton.

- #485-50 Stainless Steel Tapered Pourer
- #225-50 Stainless Pourer w/ Screen.
 Keeps insects out!
- #296-50 Stainless Tapered Pourer w/
 Hinged Cap



#485-50



#225-50



#296-50



Exacto-Pour® Test Kits

A liquid calibration system that is the most effective way to train and test bartenders. Tube markings are geared to hitting a specific target and the 1/16-oz. variance lines indicate how far off target you are. Durable plastic case and tubes. Funnel included.

- #13-908 3 Tube Set, Complete
- #13-910 7 Tube Set, Complete



#13-910
(Front/Back)



#13-910
(Top View)



#13-908
(Top View)

Dust Caps

Packed 144 each per poly bag.

- #301-02 1/2" L, Black, F/#282, 285 (1/4" ID)
 #302-02 1/2" L, Black, F/#220, 222 (11/32" ID)
 #303-02 3/4" L, Black, F/#350, #360, #370,
 and Posi-Por 2000 Series (13/32" ID)



#301-02



#302-02



#303-02

Longer length with a finger pull tab for easy removal. Packed 1 dozen per poly bag.

Narrow: 2-1/4" L, F/#220, 225, 282, 285, and non-screened 320 series (7/16" ID)

#331-02 Black #331-03 Red

Wide: 1-1/4" L, F/#333, 350, 360, and 370 Series (1/2" ID)

#332-02 Black #332-03 Red



#331-02



#331-03



#332-02



#332-03

Universal Covers

Fits a wide assortment of pourers with or without collars. 1 dozen per bag.

- #1241-0 Small 13/4" L, Smoke
 (F/#350 Only)
 #1242-0 Large 3" L, Smoke
 (Does not fit Posi-Por with collar or #320 Whiskeygates)



#1241-0



#1242-0

Replacement Poly-Korks

Extra korks available to fit most metal pourers. For fifth, quart and liter bottles, cork fins range from 3/4" to 15/16". For 1.75 liter, half gallon and gallon bottles, cork fins range from 63/64" to 1-3/16"

- | | | |
|------------|-------------|------------|
| #PK-220-05 | F/#220, 222 | 50 ea./Bag |
| #PK-285-05 | F/#282, 285 | 50 ea./Bag |
| #PK-220-06 | F/#220, 222 | 12 ea./Bag |
| #PK-285-06 | F/#282, 285 | 12 ea./Bag |



#PK-220-05



#PK-220-06

PLASTIC MEASURED



#382-2
NEON RED
Black Collar



#383-2
NEON GREEN
Black Collar



#385-2
NEON BLUE
Black Collar



#386-2
SMOKE
Black Collar



#387-2
CLEAR
Black Collar



#389-2
RED
Black Collar



#382-1
NEON RED
No Collar



#383-1
NEON GREEN
No Collar



#385-1
NEON BLUE
No Collar



#386-1
SMOKE
No Collar



#387-1
CLEAR
No Collar



#389-1
RED
No Collar



Posi-Por 2000 Series

THE SPEEDIEST AND MOST ACCURATE CONTROL POURER KNOWN TO MAN.

Streamlined and attractive. Strong and durable. The Posi-Por 2000 is designed for professional bartenders in fast paced environments. Available in a variety of colors and sizes, with and without collars. Made in the USA. Packed 1 dozen of one make per bag. #303-02 dust caps are available for the 2000 Series. White Cork fits standard Quart and Liter bottles.

More sizes and colors available for custom order. Please inquire to learn more.

POSI-POR MEASURING POURER SIZING

OUNCE SIZE	5th DIGIT OF ITEM NUMBER	CORRESPONDING BOTTOM COLOR
1/2 oz.	0	LILAC
3/4 oz.	2	GREEN
1 oz.	4	RED
1-1/4 oz.	6	CLEAR
1-1/2 oz.	7	YELLOW
2 oz.	8	WHITE

Example: #389-26 would be a Posi-Por 2000 Red Spout with Black Collar measuring 1-1/4 oz. with a clear bottom stem color.



Posi-Por Original Series

Same performance as 2000 Series. Different look.



#399-2

RED

Black Collar



#399-1

RED

No Collar



#398-2

CHROME-PLATED

Black Collar



#398-1

CHROME-PLATED

No Collar

All Original Series Posi-Pors available in six sizes: 1/2 oz, 3/4 oz, 1 oz, 1-1/4 oz, 1-1/2 oz, and 2 oz
Packed 1 dozen of one make per bag. More sizes and colors available for custom order.



Posi-Por Series with Mods

Flip Top

Helps protect against bugs and other contaminants. Add "FT" after five-digit item number. Additional costs apply. Only available for the 2000 Series Posi-Por units.



"FT"

Amber Cork

Fits unusually large bottle necks along with gallon bottles. Add "AC" after five-digit item number. Only available on Posi-Pors without collars. Additional costs apply. Available for both Original and 2000 Series Posi-Por units.



"AC"

Also sold separately in 12-packs:

- #386-30 Smoke
- #387-30 Clear
- #389-30 Red

Oversized Red Cork

Fits oversized quart and liter bottle necks along with half gallon and 1.75 liter bottles. Add "OS" after five-digit item number. Available for both Original and 2000 Series Posi-Por units.



"OS"

Economy Pourers

Measured pourers ideal for cost conscious applications. Clear or red with black collar. Packed 1 dozen per bag. Certain units are imprinted with the trusted Spill-Stop logo. Call for current imprinted selections.

CLEAR

#787-24	1 oz
#787-26	1-1/4 oz
#787-27	1-1/2 oz



#787-24



#787-26



#787-27

RED

#789-21	5/8 oz
#789-22	3/4 oz
#789-23	7/8 oz
#789-24	1 oz
#789-25	1-1/8 oz
#789-26	1-1/4 oz
#789-27	1-1/2 oz
#789-28	2 oz



#789-21



#789-22



#789-23



#789-24



#789-25



#789-26



#789-27



#789-28

PLASTIC FREE FLOW



“The Original” BAN-M® Pourers

“The one with the screen!” Keeps insects out.

Packed 1 dozen/bag. Minimum order 1 gross.

- #313-00 Clear w/Black Collar
- #313-02 Smoke w/Black Collar
- #313-03 Red w/Black Collar
- #313-04 Green w/Black Collar
- #313-05 Blue w/Black Collar
- #313-06 Amber w/Black Collar



#313-00



#313-02



#313-03



#313-04



#313-05



#313-06



Whiskeygate

Popular slow pourer made of SAN plastic with an Ultrathane cork. Packed 1 dozen/bag.

- #320-00 Clear, No Collar
- #320-01 Clear w/Black Collar
- #320-02 Black w/Black Collar



#320-00



#320-01



#320-02

Use #320-10
Black Dust
Caps. Packed 144
ea./bag



Juice Jet

Sized to fit 60 oz and 64 oz PET bottles, typical with many popular fruit-based drinks. Drip and leak free. Pours fast. Sold by the dozen and in bulk.

- #321-00 Clear



#321-00



Disposapourer

Inexpensive disposable pourer. Available in red only. Packed 1 gross/bag. 12 gross/cs. Minimum order of 12 gross.

- #333-00 Red



#333-00

Plastic Pourer w/Flip Cap

Weighted flip-top cap prevents unwanted debris from entering liquor bottles without slowing speed. The cap acts as a barrier to fruit flies and other pests. 3.75" x 1.25"

#345-00



#345-00

Economy Plastic Pourers

Molded of an extremely soft, flexible material that will, with care, endure indefinitely. Packed 1 dozen/bag. 1 gross of one color per carton.

Minimum order of 1 gross.

#350-00	Semi-Clear	#350-06	Yellow
#350-03	Fluorescent Red	#350-07	White
#350-04	Green	#350-08	Black
#350-05	Blue	#350-09	Scarlet

Approved by the Flair Bartenders Association



#350-00



#350-03



#350-04



#350-05



#350-06



#350-07



#350-08



#350-09

Plastic Speed Pourers

Speed version of #350.

#355-03	Fluorescent Red
#355-08	Black



#355-03



#355-08

Signature Plastic Pourers

Molded of strong plastic with a soft poly-kork securely attached. Packed 1 dozen/bag. 1 gross/carton. Minimum order of 1 gross.

#360-00	Clear
#361-00	Clear w/Black Collar
#365-00	Smoke
#366-00	Smoke w/Black Collar
#370-00	Chrome
#371-00	Chrome w/Black Collar



#360-00



#361-00



#365-00



#366-00



#370-00



#371-00



Extra-Large Poly-Kork

Fits oversized quart, liter, half gallon, and 1.75 liter bottles. Packed 1 dozen/bag.

- #313-60 Clear Ban-M (available in 6 colors)
- #361-00 Clear
- #365-00 Smoke
- #366-00 Chrome



#313-60



#360-60



#365-60



#370-60



Mason Jar Pourer

Fits standard 2-1/2" mouth (not wide mouth) Mason jars commonly used by moonshine distillers. Free flow spout permanently affixed to screw-on Mason jar cap. Packed 1 dozen/bag.

- #381-00 Clear/Gold



#381-00



Posi-Por Free Pourers

Same high quality as measuring pourers. Packed 1 dozen/bag.

- #387-01 Clear w/ Standard Cork
Fins Range: 3/4" to 15/1"
- #387-01OS Clear w/ Red Cork
Fins Range: 13/16" to 1-1/16"
- #387-01AC Clear w/ Amber Cork
Fins Range: 1" to 1-3/16"
- #387-01BC Clear w/ Blue Cork
Fins Range: 63/64" to 1-21/64"



#387-01



#387-01OS



#387-01AC



#387-01BC



#381-00 on a Mason Jar

Bar Service



“A bartender is just a pharmacist with limited inventory.”

- Albert Einstein

JIGGERS

Japanese Style

All jiggers are made from stainless steel.
Available in three finishes. Measures 1 x 2 oz.
inside. Individually packaged.

- #818-01 Stainless Steel
- #818-12 Gold PVD Coating
- #818-18 Black PVD Coating



#818-01



#818-12



#818-18

Traditional Style

Polished stainless steel. Packed 1 dz/ctn

- #100-11 1/2 x 1 oz.
- #100-12 1 x 1 oz.
- #100-13 3/4 x 1 oz.
- #100-14 3/4 x 1 oz.
- #100-15 3/4 x 1-1/2 oz.
- #100-16 7/8 x 1-1/4 oz.
- #100-17 1 x 1-1/2 oz.
- #100-18 1 x 2 oz.



100 Series
Jigger Family



#100-20

Multi-Level
Jigger, Stainless,
1/2 x 2-1/2 oz



SHAKERS

Vinyl-Coated Shakers

Stainless steel with vinyl coating. Individually boxed.

VINYL-COATED STANDARD

- #103-20 28 oz | Black | 6.875" H, 3.625" Top Dia.
- #103-21 16 oz | Black | 4.5" H, 3.25" Top Dia.
- #103-30 28 oz | Red | 6.875" H, 3.625" Top Dia.
- #103-31 16 oz | Red | 4.5" H, 3.25" Top Dia.
- #103-50 28 oz | Blue | 6.875" H, 3.625" Top Dia.
- #103-51 16 oz | Blue | 4.5" H, 3.25" Top Dia.



#103-20



#103-30



#103-50

VINYL-COATED DELUXE

- #103-22 24 oz | Black | 6.625" Base Height, w/Cap 9.375", 3.3125" Top Diameter
- #103-23 16 oz | Black | 5" Base Height w/Cap 7.625", 3" Top Diameter
- #103-24 8 oz | Black | 3.5" Base Height w/Cap 5.75", 2.5" Top Diameter

#103-22



CLEAR PLASTIC

This variant is Made in the USA

- #103-92 28 oz | 6.875" Base Height, w/ Cap 9.75", 3.75" Top Diameter
- #103-93 16 oz | 4.5" Base Height, w/ Cap 7.375", 3.75" Top Diameter

#103-92



3-Piece Shaker Sets

Stainless steel shaker, strainer and jigger in one compact unit. Individually packaged.

STANDARD

- #103-02 28 oz | 6.625" Base Height, w/Cap 9.5" 3.75" Top Diameter
- #103-03 16 oz | 3.75" Base Height, w/Cap 7.375" 3" Top Diameter
- #103-04 8 oz | 3.125" Base Height, w/Cap 5.75" 3" Top Diameter

DELUXE

- #103-12 24 oz | 6.625" Base Height, w/Cap 9.375" 3.3125" Top Diameter
- #103-13 16 oz | 5" Base Height, w/Cap 7.625" 3" Top Diameter
- #103-14 8 oz | 3.5" Base Height, w/Cap 5.75" 2.5" Top Diameter



#103-02



#103-12

2-Piece Cocktail Shakers

All cans are made from stainless steel. 18-oz and 28-oz boxed as a 2-piece "Boston" set.

- #803-21 Premium Stainless
- #803-24 Distressed
- #103-60 Stainless
- #103-62 Gold
- #103-68 Black



Single Cocktail Shakers

Stainless steel with reinforced bottom. Fits standard mixing glasses. 1 dozen per carton.

- #103-00 28 oz | 6.875" H, 3.625" Top Dia.
- #103-01 16 oz | 4.5" H, 3.25" Top Dia.
- #103-18 18oz | 5.125" H, 3.375" Top Dia.



#103-00



#103-01



#103-18



STRAINERS

Julep Strainers

Characterized by its perforated, bowl-shaped design, the Julep strainer is named for its original association with the Mint Julep cocktail, where it was used to retain ice and mint. Now it's commonly used to strain a variety of stirred cocktails. Made from stainless steel and boxed individually.

#8018-1	Premium Stainless Steel
#8018-4	Premium Distressed Steel
#1018-2	Gold
#1018-8	Black
#1018-0	Std/ Stainless Steel, 12-Pack Only 6.25" L x 3" W



Fine Mesh Strainers

Tightly woven mesh with very small holes, allowing for the removal of fine particles like tea leaves, coffee grounds, and sugar clumps in cocktails and other drinks. Individually packaged.

#8016-1	Premium Stainless Steel
#8016-4	Premium Distressed Steel
#1016-0	Stainless Steel, Conical





#8012-1



#8012-4

Cocktail Strainers

Polished heavy-duty stainless steel. Closely coiled spring will not jump off.

- #8012-1 Premium Stainless Steel, 2-Prong
- #8012-4 Premium Distressed Steel, 2-Prong
- #1014-0 Stainless Steel, 4-Prong
- #1014-2 Gold, 4-Prong
- #1014-8 Black, 4-Prong
- #1012-0 Stainless Steel, 2-Prong
- #1010-0 Stainless Steel, 1-Prong



#1014-2



#1014-8



#1012-0



#1014-0



#1010-0

MISC. BAR TOOLS

Ice Scoop

For crushed or cracked ice, candy, nuts, sugar, etc. Stainless steel. 1 dz/ctn

#1400-0 4 oz.



#1400-0

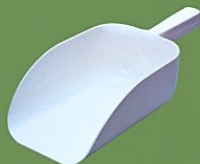
Plastic Scoops

Stackable. 15" L x 6" W x 3.5" D

#1401-3 82 oz. | RED

#1401-5 82 oz. | BLUE

#1401-7 82 oz. | WHITE



#1401-7

Slotted Scoops

Separates water from ice as you scoop. Heavy-duty plastic.

10.25" L x 3.875" W x 2.5" D

#1408-2 8 oz. | BLACK

#1408-5 8 oz. | BLUE



#1408-2

10.75" L x 4.125" W x 2.75" D

#1412-2 12 oz. | BLACK

#1412-5 12 oz. | BLUE



#1412-5

Scoop Holders

Wire formed holders to hold scoops securely. Open cage style that will not accumulate debris. Made of rust-resistant powder coated steel wire. Plastic bolts and nuts provided for attaching to any vertical surface.

#1402-0 Large. F/32-82 oz. Scoops
Cage Dims: Top 6.5" W,
Bottom 3.9375" W, 6.875" H,
3.6875" D

#1402-1 Medium. F/8-16 oz. Scoops
Cage Dims: Top 3.875" W,
4.25" H, 2.75" D

#1402-2 Small. F/2-6 oz. Scoops Cage
Dims: Top 3.5" W, 4" H,
1.25" D



#1402-0

Stainless Speed Racks

Available in three lengths to suit individual needs.
Keyhole mount or hangers sold separately.

Single Racks

- #13-522 22" L | Holds Five 750ml Bottles
- #13-532 32" L | Holds Eight 750ml Bottles
- #13-542 42" L | Holds Ten 750ml Bottles

Double Racks

- #13-622 22" L | Holds Ten 750ml Bottles
- #13-632 32" L | Holds Sixteen 750ml Bottles
- #13-642 42" L | Holds Twenty 750ml Bottles

#13-500 Hangers F/Above Speed Racks
Sold as a Pair, 9.25" L



Multi-Purpose Mix-N-Pour Units

Lightweight and durable. Fits speed racks. Each is a complete unit with canister, non-slip neck, lid and spout. Color-coded contents for easy identification: red, green, orange, yellow, clear and brown. Cases are assorted colors.

- #1692-0A Quart Complete | 12 each/case
- #1693-0 Half Gallon Complete | 6 each/case
- #1694-0 Gallon Complete | 6 each / case

Replacement Parts Sold Individually:

- #1699 Spout Only (Available in 6 Colors)
- #1698-0 Dispenser Neck Only
- #1697 Extra Lid for Base (Available in 6 Colors)
- #169-02 Quart Base
- #169-03 Half Gallon Base
- #169-04 Gallon Base



Quarts Shown on Top, Half Gallons Below



Bar Aide

This organizer eliminates fumbling for your cocktail accessories. Everything has its place.

#150-00 9" L, 5-1/4" W, 4 1/4" H
Napkin Opening 5" x 5"

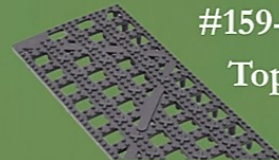


#150-00

Interlocking Mat Strip

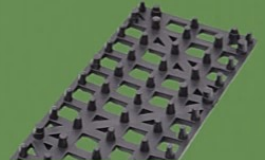
Shelf strip liner for speed rails, beer tap drains and bar shelving. 3.5" W x 12" L

#159-02 Black



#159-02

Top



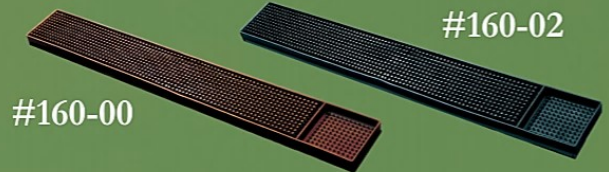
Bottom

Bar Mats

Perfect work surface for any bar. Non-slipping eliminates breakage by gripping glasses.

#160-00 3-1/4" x 24-1/4" x 1/2" H, Brown

#160-02 3-1/4" x 24-1/4" x 1/2" H, Black



#160-00

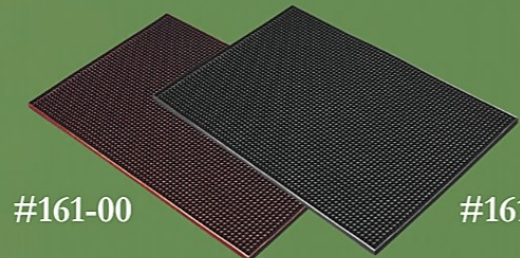
#160-02

Service Mats

Ideal for bar service areas. Flexible for easy cleaning in bar sink.

#161-00 12-1/4" x 18-1/4" x 3/8" H, Brown

#161-02 12-1/4" x 18-1/4" x 3/8" H, Black



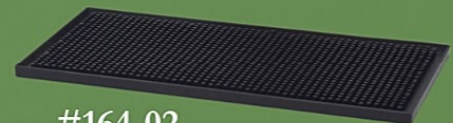
#161-00

#161-02

Shaker Mat

Smaller size for working on bar top. Perfect for one shaker, one glass, or a set of cocktail shakers. 6" W x 12" L

#164-02 Black



#164-02

Draft Beer Drip Tray Mat

Cutout to fit beer draft faucet. 7" W x 12" L, 4.5" Diameter

#165-02 Black



#165-02

Jerry Spring Whisk

Perfect tool for flip cocktail preparation. Use for recipes that include eggs. For best results use at the "dry shake" or "reverse dry shake" stage to increase emulsification creating denser, longer lasting foam. Individually carded.

#800-00 Stainless Steel



#800-00

Bar Whisk Square

10.5" x 1" W. Individually packed.

#800-10 Stainless Steel



#800-10

Bar Apron

Bib apron, pocket-free style. Leather look, made with brown vinyl. Approximately 28" L x 25" W

#105-00 One Size Fits Most



#105-00

Specialty Glassware

Elegant and eye-catching glassware. Fragile.
Hand wash only.

BITTERS BOTTLE #800-20 - Japanese glass bottle with stainless steel screw on dasher cap.
Capacity: 90ml, Height: 5.75", Diameter: 2.75"

MIXING GLASS #800-22 - Hand blown, hand cut seamless Yarai diamond patterned mixing glass with wide, sturdy base and beaker-like spout. Note: Due to the nature of glassware, weight and size may vary; bubbles may be visible but are not a defect.
Capacity: 600ml, Height: 5.75", Diameter: 3.5"



#800-20



#800-22

Swords & Arrows

Available in assorted colors or by solid case pack of black. Packed 1,000 ea./inner, 10,000 ea./case. Minimum order is one case.

- #400-00 Sword Picks, Assorted Colors, Solid Color Inner Pack. 3" L
 #400-02 Sword Picks, Black Only. 3" L
 #401-02 Arrow Picks, Black Only. 3-1/4" L



#400-00

#401-02

Fancy Parasol Picks

Multi-color designs printed on assorted colored papers. 200 per box.

- #402-10 3-1/4" Dia. Open, Assorted



#402-10

Bamboo Knot Picks

Garnish cocktails and sandwiches. Compostable and chemical-free alternative to plastic picks. Long length for versatility. 100/bag. 30 bags/case. Minimum order is one case.

- #403-00 4.75" L, Assorted



#403-00

Glass Rimmers

Rims the glass with salt or sugar in seconds. Packed one each per retail display box.

- #442-00 Two-Tier, Rims a 6-1/2" Glass, Marked Lime Juice & Salt
 #442-01 Replacement Sponge, 6-1/2", Center Hole Dia. 1-1/2" 12 ea./bag
 #444-00 Three-Tier, Rims a 5-1/2" Glass, Marked Lime Juice, Salt & Sugar
 #444-01 Replacement Sponge, 5-1/2", Center Hole Dia. 1-1/2" 12 ea./bag



#442-00



#444-00

Bomb Cups

Disposable, stackable, plastic cup with 1 ounce shot center chamber and a 2-3/4 oz. surrounding area for the chaser. Packed 50 per sleeve, 10 sleeves per case. Minimum order is one case.

- #12-600 Clear
 #12-604 Neon Green



#12-600



#12-604

Tip Jars

Clear plastic carafe-shaped jar. Bottom unscrews for easy access. 1 dz./cs.

#181-00 10-3/4" H, Plain, Clear

#181-01 10-3/4" H, "Thank You"



#181-00



#181-01

Ketchup Saver

Transfer ketchup to other bottles without the mess.

#12-301 Opening 1-1/2" Dia., 2 ea./pack



#12-301



Posi-Fill Dispensers

Quickly refill standard salt and pepper shakers with no mess. Sold individually.

#12-501P Pepper

#12-501S Salt



#12-501P



#12-501S

Bottle Stopper

Reusable stopper with silicone seal. Preserves wine to prevent oxidation and change of flavor. Can be used in wine, liquor, beer & soda bottles. Fits 750ml with neck opening around .75", 3.25" L x 1.5" W.

#13-450



#13-450

Ash Trays

Plastic. Packed 1 dozen per inner box. 6 dz./cs.

#70-263 4" Dia. x 1-1/2" H - Black

#70-265 4" Dia. x 1-1/2" H - Red

Executive model. Center safety ridge and cigar notch. Packed 1 dozen per inner box.

#70-341 7" Dia. - Black



#70-263



#70-265



#70-341

Tip Trays

Two classic styles. Packed 1 dz/bx. Dishwasher safe. Available plain or imprinted with "Thank You".

PLAIN

IMPRINTED

#7212-2 4" x 6" - Black

#7212-3 4" x 6" - Black



#7212-2



#7212-3



Old Fashioned Bottle Opener

Keyhole mounting slots for easy removal. Brushed stainless steel. Made in the USA.

#13-300 3.25" L x 2.75" W x 1.25" D



#13-300

Super Openers

1 dozen per carton. 7" L

Polished Stainless Steel

#13-352

#13-360 w/Pourer Puller



Super Openers



Powder-Coated Openers

<u>Vinyl-Coated</u>		<u>Powder-Coated</u>	
#13-353	Red	#13-343	Red
#13-354	Green	#13-345	Blue
#13-355	Blue	#13-346	Light Blue
#13-358	Black	#13-348	Black
		#13-349	Pink

Bottle/Can Openers

#13-206 Chrome Plated, 3.5" L x 1.375" W

#13-360 Stainless Steel, 7" L

#13-411 Nickel Plated, 4" L x .75" W



#13-206



#13-360



#13-411

Can Punches

Nickel-plated. 1 dozen per carton.

#13-475 8" L, Combo Std/Giant Punch

#13-476 7" L, 7" Giant Punch



#13-475



#13-476

Bottle Cap Catchers

Keyhole mounting slots for easy removal. Brushed stainless steel.

#13-926 5.25" L x 3.25" W x 6.375" Bin H, 9.25" H

#13-929 5.25" L x 3.25" W x 10" Bin H, 13" H



#13-926



#13-929

WINE & CHAMPAGNE

Waiter's Corkscrews

Chrome-plated multi-functional corkscrew, knife and bottle opener. 1 dz/ctn.

#131-01 4-1/4" L

#131-03 4-3/8" L, w/ Black Handle



#131-01



#131-03

Wood Handle Corkscrew

Self-pulling. Just turn and cork automatically lifts. 2 dz/ctn.

#131-04 5-5/8" L



#131-04

Winged Corkscrew

Chrome-plated corkscrew with bottle opener designed with twist-in, press-down wings for swift cork removal. 1 dz/ctn.

#131-02 6-5/8" L



#131-02

Pocket Corkscrews

Inexpensive plastic corkscrew disassembles for safe handling. 4" L housed, 3-1/2" L assembled.

#132-00 Beige

#132-02 Black

#132-04 Green

#132-05 Blue

#132-07 White



#132-00



Shown housed and ready to use.

Stainless Champagne Stopper

Keeps champagne fresh by preserving the bubbles. Reseal and reopen bottles easily. Made by Vacu Vin.

#13-749



#13-749

Wine Decanter with Stopper

Aerate your wine. Cork included. Made by Vacu Vin.

#13-750



#13-750

Wine Set, Elegant 5-Piece, Black

Includes 5 essential wine accessories to open, chill and preserve wine. Contents: Corkscrew twister, cooler, server, and wine saver w/stopper. Made by Vacu Vin.

#13-751



#13-751

Electric Wine Opener, Black

Effortlessly removes cork at press of a button. Includes foil cutter and USB-C rechargeable battery. Opens up to 35 bottles on one charge. Made by Vacu Vin.

#13-752



#13-752

Electric Wine, Saver, Black

Keep wine fresh longer. W/ USB-C rechargeable battery, seals up to 40 bottles. Made by Vacu Vin.

#13-753



#13-753

Wine Saver

Air is extracted from the bottle by the vacuum pump and resealed with a reusable rubber stopper. Made by Vacu Vin.

- #13-740 Pump w/One Stopper
Carded Individually, White
- #13-742 Extra Stoppers, 2-pack
- #13-745 Extra Stoppers, 10-pack



#13-740



#13-742

#13-745

Champagne Saver

Non-drip serving. Patented “Pull Down Bottle Grip”. Keeps opened bottles fresher longer. Fits most champagne bottles. Made by Vacu Vin.

#13-746



#13-746

Wine Aerator

Transparent, detachable top. Stores around the neck of most wine bottles. Hand wash. Made by Vacu Vin.

#13-747



#13-747

Wine Server

Non-drip pouring every time. Elegant crystal appearance. Fits most wine bottles. 2-pack. Made by Vacu Vin.

#13-748



#13-748

Utensils, Garnishing & Sinkware



“One cannot think well, love well, sleep well, if one has not dined well.”

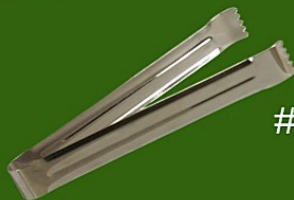
- Virginia Woolf

TONGS & MUDDLERS

Roll Tongs

Polished stainless steel ideal for handling rolls, doughnuts, frankfurters, etc. 1 dz./ctn.

#1406-0 6" L



#1406-0

Ice Tongs

Claw style, perfect for ice. 1 dz./ctn.

#1406-1 6" L



#1406-1

Offset Bar Tweezer

For precise placement of small ingredients.

Sold individually.

#1406-2 8" L



#1406-2

Muddler Classic Styles

Comfortable design make each variant comfortable to hold while mashing fruits or herbs to release their flavors in any drink or recipe.

#145-00 7-1/2" L, Brushed Stainless Steel

#145-08 8" L, Hardwood

#145-10 10" L, Hardwood

#145-20 8-1/2" L, Black Plastic



#145-00



#145-08



#145-20



Olive Express™

The fastest way to stuff olives. Without pressing the utensil together, pick up the filling until the chamber is full. Squeeze to release filling into olive. Dishwasher safe.

#6358-2 High Impact Polystyrene



#6358-2

SPOONS

Mixing Spoons

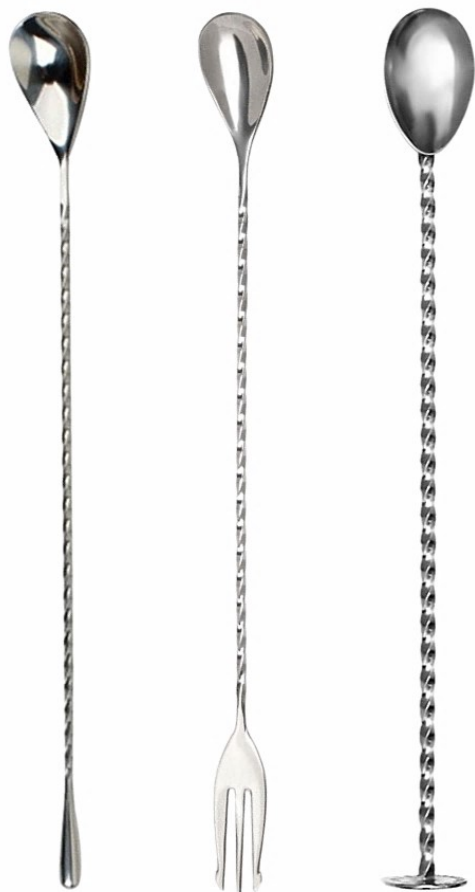
All spoons made from stainless steel.
Available in 3 finishes. Individually packaged.

DROPLET - Classic Simple Design

#830-11 Stainless Steel, 30cm
#850-11 Stainless Steel, 50cm

TRIDENT - Forked End to Garnish Drinks

#830-21 Stainless Steel, 30cm
#840-21 Stainless Steel, 40cm
#850-21 Stainless Steel, 50cm



#830-11 Droplet
#830-21 Trident
#825-31 Muddler

BONZER® DISC MUDDLER - Twisted Handle w/ Disc Muddler for Pouring Liquid Down the Handle and Layering Off the Disc End. Spoon provides a 5ml measure.

#825-31 Stainless Steel, 27cm
#825-34 Distressed Steel, 27cm
#840-31 Stainless Steel, 40cm
#840-34 Distressed Steel, 40cm



Premium Droplet Spoons

PVD coating over stainless steel. PVD coatings offer superior performance in terms of wear resistance, hardness, and corrosion protection. Hand wash only. Individually packed.

- #833-12 Gold PVD Coating, 33cm
- #833-18 Black PVD Coating, 33cm



#833-12 #833-18

Traditional Bar Spoons

Polished stainless steel bar spoon with twisted handle. Come with or without red handle knob. Packaged 1 dozen per carton.

- #1109-3-TK 9.75" L w/Knob
- #1111-2-T 11" L
- #1111-3-TK 11.125" L w/Knob
- #1113-2-T 10" L, Dime



#1109-3-TK #1111-2-T



#1111-3-TK #1113-2-T



Mixing Tins

Combine ingredients. Either stir or shake as desired. Often then used with strainer to pour the mix. PVD coatings offer superior performance in terms of wear resistance, hardness, and corrosion protection. Individually boxed. Hand wash only.

- #103-70 Stainless Steel, 26 oz.
- #103-72 Gold PVD Coating, 26 oz.
- #103-78 Black PVD Coating, 26 oz.



#103-70 #103-72 #103-78

CUT, PEEL, & SQUEEZE

Ice Chipper

Heavy die-cast body with six hardened steel points. Packaged 1 dozen per carton.

#1420-0 9" L



#1420-0

Lemon/Lime Squeezer

Polished heavy duty stainless steel. Easy to clean. Packaged 1 dozen per carton.

#1020-0 Stainless Style

#1022-0 Open Jaw Style

#1024-0 Hinged Elbow, Stainless



#1020-0



#1022-0



#1024-0

Cutting Board

Bar-sized board is made from a non-porous poly material for safe food handling. Cutting area is 8.75" x 6".

#1226-0 6" W x 10" L x 1/2" H, White



#1226-0

Knife Sold Separately



Lemon/Lime Peeler

Handy for every bartender. Packaged 1 dozen per carton.

#1025-0 6-1/2" L



#1025-0

Bar Knife

All-purpose tool for condiments. 3-1/2" L stainless steel blade.

#1200-0 7-1/4" L



#1200-0

FOOD SERVICE

Pizza Trays

"Coupe-style" traditional round aluminum pizza pan with smooth, shallow rim that allows for easy slicing and serving directly on the pan. Sold individually in four sizes.

- #12-705 12" Tray
- #12-706 14" Tray
- #12-707 16" Tray
- #12-708 18" Tray

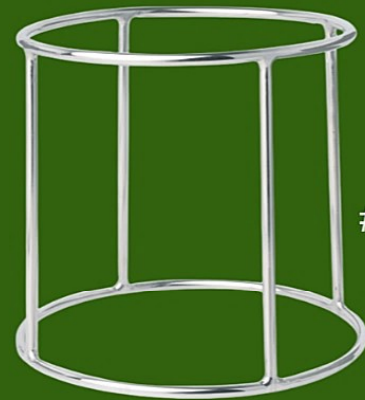
Pizza Tray
Series



Wire Stand for Bowl

Heavy duty. Perfect for salad bowls and also can be used to place pizza trays.

#12-720 8" x 9" x 8"



#12-720

Riser C-Type 3-Piece

Hammered-style stainless steel. Set of three sizes (6", 7" & 8"). Used for tiered display of foods, desserts and other items, enhancing the visual appeal. Small - 6" x 6" x 4.5". Medium - 7" x 7" x 6.25". Large - 8" x 8" x 8.5".

#12-715 3-Piece Set



#12-715

Moscow Mule Mugs

Stainless steel with handle.

#12-610 14 Oz | 3.1" x 3.3"

#12-611 18 Oz | 3.1" x 3.8"

#12-615 18 Oz, Hammered-Style | 3.1" x 3.8"



#12-610



#12-615

Stainless Steel Straw

Bended stainless steel.

#12-620 .25" Dia. x 8" L



#12-620

Taco Trays

Stainless steel. Each compartment fits one taco or similarly sized food item.

#12-710 3-Compartment | 8.3" x 4" x 1.9"

#12-711 4-Compartment | 11" x 5.9" x 2"



#12-711

#12-710

Serving Basket, Conical

Stainless steel with black wire. Two cup holders.

Perfect for fries, mozzarella sticks, & more!

#12-700 5" x 9"



#12-700

Ice Bucket

Stainless steel. 1.8 Quart.

Double walled to keep ice chilled and reduce condensation on the outside of the bucket.

1.8-Quart, Individually Packed



#633-00



Chillable Condiment Container

Black plastic condiment holder has a semi-clear top with six 1-pint, white, hard, plastic bins. Deep tray allows for 1" ice cooling underneath bins. BPA free.

- | | |
|---------|--|
| #155-00 | Container w/Six 1-Pint Bins
9.5" L x 6.25" W x 4.5" H |
| #155-16 | 1 Pint Extra Bin
5.5" L x 3" W x 3" D |
| #155-24 | 1.5 Pint Extra Bin
5.5" L x 3.375" W x 3" D |
| #155-32 | 1 Quart Extra Bin
5.5" x 6" W x 3" D |



#155-00



#155-16



#155-24



#155-32

Flight Paddle

Wood, Four Glass, 18"

Cutout to fit glasses. 3" center to center of each cutout. Polished rubber wood.

2.25" Diameter.



#600-00

SINKWARE

Electric Upright Glass Washer

"Redhead" Glass Washer, 5-brush, (4) 7" brushes and (1) 8-3/4" center brush, 1/3 HP, 4.3 amps, 115v/60/1-ph, NEMA 51P, CE. Quick and easy installation. Removes stains on glass surface. 13-1/2" L x 8" W x 18" H

- #555-00 Electric Glass Washer
- #555-01 Outside 7" Replacement Brush
- #555-02 Center 8-3/4" Replacement Brush



Bar Towel

Economical and tough white cotton broadcloth with colored stripe. Sold by the dozen.

- #1004-0 14" x 25"



Bar Mop

White cotton terrycloth towel. Sold by the dozen.

- #1007-0 16" x 19"





Bar Drain Tray

Complete with drain extension tube that fits into overflow pipe. Tube: 3-1/4" L, 1/2" ID, 5/8" OD

#13-760 14" L x 5" W x 3" D

#13-761 Replacement Tube



#13-760



Overflow Pipes

Diameters listed are for sink drain sizes.

#13-700 7" L, F/1" to 1-1/8" Dia. Tube,
5/8" ID, 3/4" OD

#13-701 10" L, F/1-3/8" to 1-5/8" Dia. Tube,
13/16" ID, 1" OD



#13-700

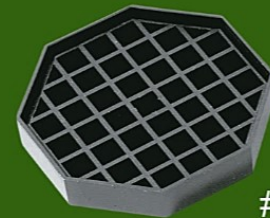


Drip Catchers

Ideal for bar service areas. Helps contain overflows and drips. Black tray with removable grid.

#1451-B 4-1/2" W x 7/8" H

#1452-B 6" W x 7/8" H



#1452-B



Drain Funnels

Designed to fit into #13-700 overflow pipe. Made of polyethylene. Packaged with medium and course screens.

#13-803 7-1/8" Dia.

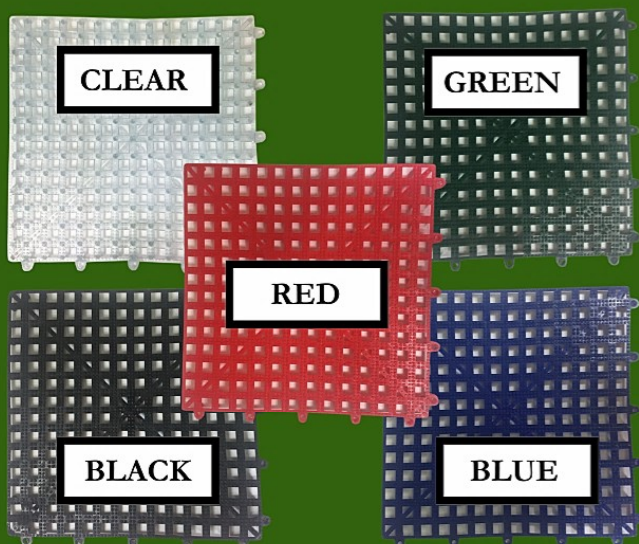


#13-803

Interlocking Mats

A premium shelf liner available in five colors to fit any decor. Perfect for use in bars, nightclubs and foodservice operations.

- #162-00 12" x 12" - Clear
- #162-02 12" x 12" - Black
- #162-03 12" x 12" - Red
- #162-04 12" x 12" - Green
- #162-05 12" x 12" - Blue



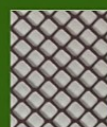
Bar Mesh

Rugged, long-lasting plastic mesh that can be cut to any size or shape. 24" W, 40' L Roll.

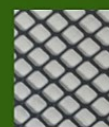
- #170-00 Clear
- #170-01 Brown
- #170-02 Black
- #170-03 Red
- #170-04 Green
- #170-05 White



CLEAR



BROWN



BLACK



RED



GREEN



WHITE

Steramine™ Tablets

Quaternary solution for sanitizing food contact surfaces. Use one tablet per gallon of water to prepare sanitizing solutions at the proper concentration required by health department regulations. 150 tablets per bottle.

- #1175-0 Tablets 6 Bottles Per Case
- #1176-0 Test Kits 15 Strips



#1175-0



#1176-0

Beer Tap Stopper

Protects against dust and insects. Push the tapered cork inside the faucet after closing. Soak during the day. Pack 12 each per poly bag.

- #1243-0 2-1/8" L, Tapers from 13/32" to 11/16" Diameter



#1243-0



FLAIR BARTENDING & SPILL-STOP

43

What is Flair Bartending?



Flair is more than a skill—it's a movement.
“SERVICE first, FLAIR second, & PASSION always”
For more info on FBA you can visit: www.barflair.org

Flair bartending is the practice of bartenders entertaining guests, clientele, or audiences with the manipulation of bar tools (like shakers and bottles) and cocktail ingredients in visually impressive ways. It combines elements of performance, juggling, and mixology.

There are two main types:

- Exhibition Flair – A highly theatrical style, often used in competitions or shows, involving elaborate tricks and routines.
- Working Flair – A more practical version used in real bar service, with simpler tricks that don't significantly slow down drink preparation.

Flair gained widespread attention through movies like *Cocktail* (1988) and is often seen in high-energy venues or competitions like those organized by the Flair Bartenders Association (FBA).

Why do Flair Bartenders Prefer the 285-50?



The Original Chrome Tapered Pourer

- Reliability and consistency with pour speeds and durability that deliver a better bottom line with your bar service.
- Allows Flair Bartenders to achieve peak performance results in accuracy tests and showmanship.
- A time-tested design that is second to none and has become the bartending industry standard.
- Easy to clean and maintain, no mess with leaks or spills.
- Made in the USA - it's more than a slogan. It means our pourers achieve a level of quality and consistency that import knock-offs simply can't match.

Flair Ambassadors



Rob Husted
BarWars LLC
www.barwars.info

Whether serving behind the bar or teaching tomorrow's top bartenders age old tricks (and a quite a few new ones!), Rob Husted and Dean Serneels are the faces of the Flair Bartender's Association (FBA). Their passion for the Spill-Stop 285-50 Chrome Tapered Pourer is proven by its inclusion in all FBA contents and events. When you're being judged by the accuracy of your pour, you're going to need the world's most reliable pourer in terms of pour speed and quality. Both were involved in the production of *Shaken and Stirred*, a flair bartending documentary that heavily features Spill-Stop pourers!



Dean Serneels
@deanserneels



Rob's Specialty Cocktail:

SOME LIKE IT HOT!

(N/A, spirit free)

INGREDIENTS

1-1/2 oz Ritual Zero Proof
 Tequila Alternative
 1/2 oz Finest Call Triple Sec
 2 oz Fresh Lime Juice
 1 oz Pineapple Reäl
 4 Deseeded Jalapenos

Procedure: In a mixing glass, muddle together 1.5 Ritual Zero Proof Tequila Alt, 1/2oz Triple Sec & 4 deseeded jalapenos. Add 2oz fresh lime, 1 oz Pineapple Reäl, and ice. Shake and strain into a large rocks glass over ice.

Garnish: Rimmed half glass of Tajin, lime wheel, jalapeno slice & pineapple leaf.



Bartender To Go!

“Cute, fun, sassy, and not too serious!” That’s how Lauren Lima describes her exciting new travelling bar service model at *Send the Bartender*. Within a week of launching the business, she had 10 bartenders on deck and 2 gigs lined up. Documenting her journey on social media, she quickly grew widespread interest. “Social media is a necessity to business. As long as you can create a brand that people like and want to see and connect to, it’s free advertising!” Bold enterprising spirit mixed with social media smarts... Lauren is a young business owner to watch!

-Lauren Lima, Founder at
Send the Bartender - Philadelphia, PA
www.sendthebartender.com



Pictured: Wherever the party, Lauren brings the fun!!!

Lauren’s first job in the food service industry was at a pizza joint at age 15. By college she transitioned to bartender, working at the popular Penn State staple Champs Downtown. After college, in combination with her ventures into the corporate world, she continued to bartend as a side hustle. A colleague asked her to work a family event, which gave her the idea to start her own business around the concept.

Lauren’s Specialty Cocktail:

SUNSET SIPPER

INGREDIENTS

1.5 oz Cherry Vodka
4 oz Lemonade
0.5 oz Grenadine



Aunt
Christine’s Recipe!



Pictured: Shannon demos her speakeasy shaker skills!!

Speakeasy Strut

Bringing big city excitement to a small town square is no simple task. Emerson & Oliver Speakeasy has cracked the code. “With our location, we’re a geographic novelty and are all about creating an experience - the ambience, the blues and jazz music from the 1920s & 30s. Our food and drink menu takes the best of what we enjoy most in our own travels. It influences our cocktails and also our chocolates!” In addition to Prohibition Era fun, E&O is one of only 200 domestic bean to bar chocolate producers. Free smells included with every visit!

-Shannon Tennant, Manager at
Emerson & Oliver - Woodstock, IL
www.eventsatethereal.com

Shannon has been a bartender for 14 years. Her career began in New Hampshire at a family-owned restaurant, and now she’s brought that East Coast dazzle to the Midwest. She loves creative freedom in her drink-making, and her true passion is thoughtfully creating new and unique cocktails that can be enjoyed by her guests at Emerson & Oliver.

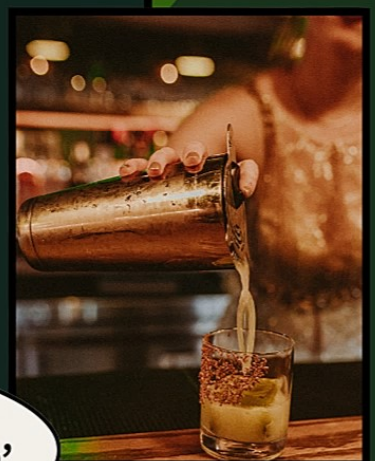
Shannon’s Specialty Cocktail:

OAXACAN ON A DREAM

INGREDIENTS

2.5 oz Peloton Mezcal
.75 oz Lime Juice
.5 oz Crushed Red Pepper Syrup
.75 oz Orgeat Syrup
1 Matcha Ice Cube
Toasted Sesame Seed Rim

**Oaxacan is
pronounced as Walkin’**



Top Shelf Tattoo

"I've used a number of different pour spouts where liquid is spilling all over my fingers. All of a sudden, it's dripping off into the drink. Dripping into the ice. Well, that's disgusting! (Seeking a solution) I ended up buying Spill-Stop 285-50 pourers myself to bring to work, because I understand the value of using the proper tools. I care about the jigger I use. I care about the types of tins I use. I want to succeed and do the best! You're not going to do that with bad tools. I want consistency and precision, which is what gave me the idea for the tattoo."

-Daniel Rieger, Manager at Endswell Bar & Bistro - Greenpoint, Brooklyn, NY
endswellbk.com



Pictured: Daniel shows off his dedication to quality!

Daniel's Specialty Cocktail:

ROMP IN THE HAY INGREDIENTS

1.25 oz Alpeggio Hay Alpine Amaro
1.25 oz Old Overholt Rye
.25 oz Lemon Juice
2 Dashes of Scrappy's Black
Lemon Bitters
Top with Soda
Dehydrated Lemon Wheel Garnish



Serve someone a quick Romp in the Hay
in under 20 seconds!

Not long after graduating from business school and landing a technical sales position, Daniel found himself rejecting the daily grind and wanting something more. Bartending had long intrigued him, and, in his free time, he found himself learning classic cocktail recipes. He took on a barback position at a local hotspot and within a week was promoted to bartender. Not one to settle, he's continued mastering his skillset and has ambitions of one day owning his own bar in Brooklyn.

INDEX



Ash Tray.....	27	Mason Jar Pourer.....	15
Ban-M Pourers.....	13	Mats.....	24, 42
Bar Aide.....	24	Mix-N-Pour.....	23
Bar Apron.....	25	Mixing Tins.....	35
Bar Drain Tray.....	41	Moscow Mule Mugs.....	38
Bar Knife.....	36	Muddlers.....	33
Bar Mesh.....	42	Olive Express.....	33
Bar Mop.....	40	Openers.....	28
Bar Towel.....	40	Overflow Pipes.....	41
Beer Tap Stopper.....	42	Picks.....	26
Bomb Cups.....	26	Pizza Trays.....	37
Bottle Cap Catchers.....	28	Posi-Fil Dispensers.....	27
Bottle Stopper.....	27	Posi-Pors.....	10, 11, 15
Can Openers.....	28	Pourers, Classic Metal.....	6-8
Can Punches.....	28	Pourers, Oversized Corks....	6, 7, 11, 15
Champagne Saver.....	31	Pourers, Plastic Free Flow.....	13-15
Champagne Stopper.....	30	Pourers, Plastic Measured.....	10-12
Condiment Container.....	39	Replacement Poly-Korks.....	9
Corkscrews.....	29	Riser for Food Display.....	37
Cutting Board.....	36	Scoops.....	22
Disposapourer.....	13	Screened Pourers.....	8
Drain Funnels.....	41	Serving Basket, Conical.....	38
Drip Catchers.....	41	Shakers.....	18-19
Dust Caps.....	9	Slotted Holders.....	22
Electric Wine Opener.....	30	Speed Pourers.....	7, 13-14
Electric Wine Saver.....	30	Speed Racks.....	22
Exacto-Pour Test Kits.....	8	Spoons.....	34-35
Flight Paddle.....	39	Stainless Steel Straw.....	38
Flip Top Pourers.....	8, 11, 14	Steramine Tablets.....	42
Glass Rimmers.....	26	Strainers.....	20-21
Glass Washer.....	40	Swords & Arrows.....	26
Glassware.....	25	Taco Trays.....	38
Ice Bucket.....	39	Tip Jars.....	27
Ice Chipper.....	36	Tip Trays.....	27
Jiggers.....	17	Tongs.....	33
Juice Jet.....	13	Tweezers.....	33
Ketchup Saver.....	27	Universal Covers.....	9
Lemon/Lime Peeler.....	36	Whiskeygate Pourers.....	13
Lemon/Lime Squeezer.....	36	Whisks.....	25
		Wine Aerator.....	31
		Wine Decanter w/Stopper.....	30
		Wine Saver.....	31
		Wine Server.....	31
		Wine Set.....	30
		Wire Stand for Bowl.....	37



SPILL-STOP

Hand Tools For the Bartender

3632 Stern Avenue, St. Charles, IL 60174

T 800-323-0722 | F 708-345-4067 |  

@SPILLSTOPBARTOOLS

www.spill-stop.com

A photograph of a bar scene. In the upper portion, a glass of dark liquid sits on a white bar top next to a metal faucet and a red push-button. The background features vertical blinds and a dark wall. The lower portion of the image shows a large, dark, reflective spill on a surface, likely the bar top or floor, which is the focus of the advertisement.

Pour Responsibly

www.spill-stop.com